

LEGEND

PRECAMBRIAN

- 25 Granite types of uncertain age.
19 Quartz-feldspar porphyry.
18 Granite and granite gneiss, massive and porphyritic; alaskite.
16 Black Trout Diorite.

SICKLE SERIES

- 13 Conglomerate.
UNCONFORMITY
12 Granite and granite gneiss; massive to porphyritic. Pegmatite.
11 Granodiorite and minor diorite; tonalite.
10 Diorite and quartz diorite. Minor amounts of included volcanics and undifferentiated acid intrusives.
9 Gabbro, norite, hornblende; minor amounts of diorite.

WASEKAN SERIES

- 8 Banded iron formation and magnetite-bearing slates.
7 Tuff, agglomerate, volcanic breccia; some interbedded flows.
6 Rhyolite and trachyte.
5 Massive and pillowed andesite and basalt, and derived schists.
3 Interbedded volcanics, sediments and tuffs.
2 Greywacke; minor siliceous sediments and interbedded flows.

SYMBOLS

- Strike and dip of bedding inclined top known overturned vertical
Strike and dip of foliation or schistosity inclined vertical Dip not reported
Geological boundary: defined, approximate, assumed.
Plunge of linear feature
Strike and dip of jointing inclined vertical
Drag fold, with plunge of axis and sense of relative motion
Fault: observed, assumed
Abnormal magnetic declination local over an area
Glacial Striae
Esker
Outcrop, or area of numerous small outcrops
Swamp, or area of open muskeg; drainage channel
Rapids, Falls and portage (with length)
Lake with area of shallow water and weeds
Area of mixed or hybrid rocks
Centre of aerial photograph
Prospect pit, or trench
Rock or reef, covered at high water

Geology by
G. C. MILLIGAN, 1957
Compiled from the field work of:
G. P. CROMBIE, 1947
M. S. STANTON, 1947
H. E. HUNTER, 1952-3

Supplemented by reports and maps of sundry exploration and mining companies now and formerly active in the area.
To accompany Publ. 57-1

Magnetic declination approximately 15° 55' east at centre of sheet, 1951
Decreasing five minutes annually.

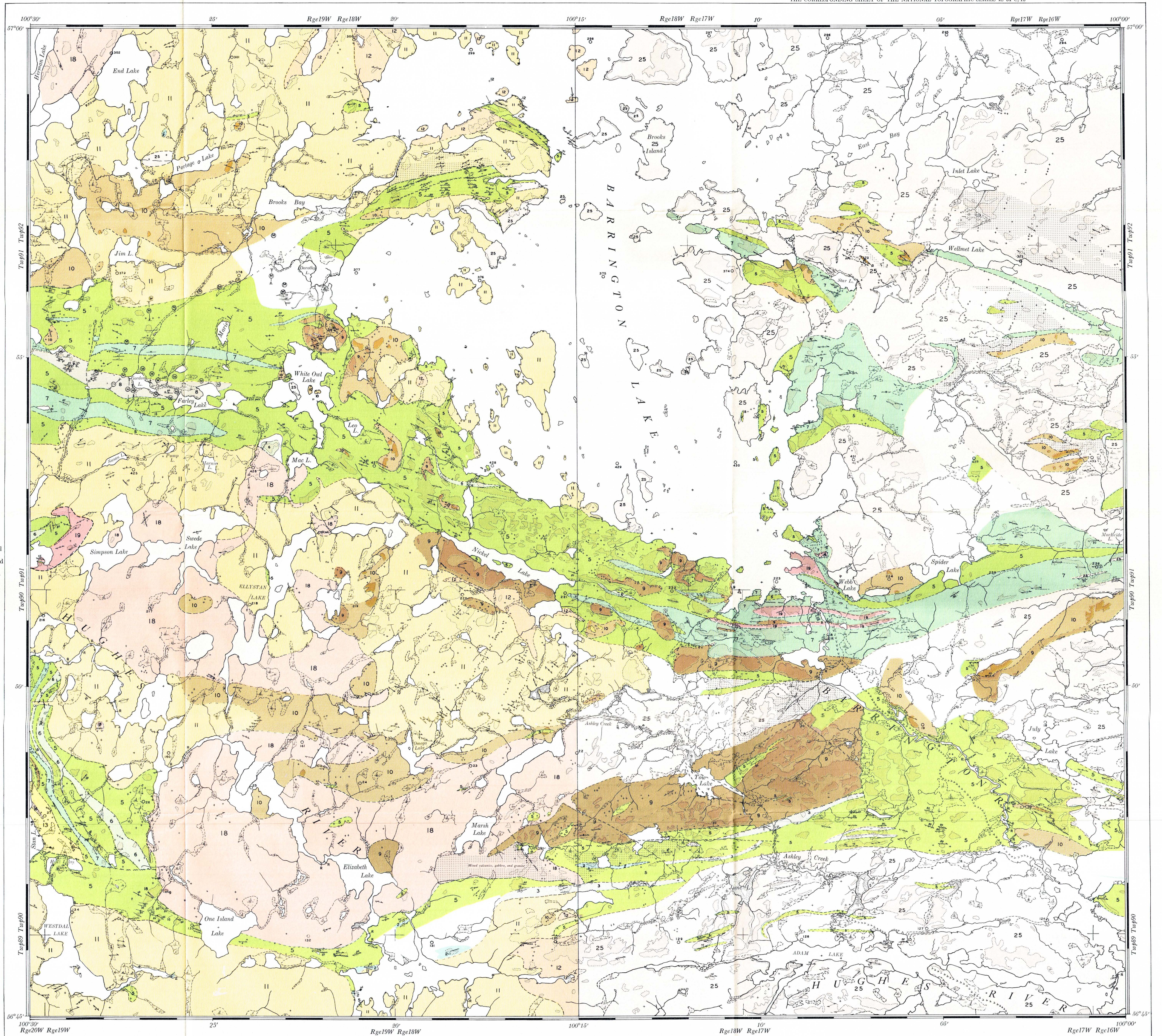
NOTE

Due to the accidental destruction of Dr. Crombie's notes, it has been impossible to identify the various granitic types in the eastern part of the area. Crombie's map has been copied, therefore, without assigning a specific age. Probably the bulk is of pre-Sickle age.

Aerial photographs numbered:
293-303 371-380 424-432 17-27 215-227 159-161 125-135
A10954 A10947 A10947 A11028 A11080 A11080 A11080
provide complete stereographic coverage of this area, and are available from the National Air Photo Library, Ottawa.

| | | | |
|--------------|-----------------|---------|---------|
| 64 F/2 | 64 F/1 | 64 G/2 | 64 G/1 |
| WELLS LAKE | MELVIN LAKE | 64 C/15 | 64 C/14 |
| COCKEAM LAKE | BARRINGTON LAKE | 64 C/10 | 64 C/9 |
| SICKLE LAKE | EDEN LAKE | 64 B/12 | 64 B/11 |

INDEX TO ADJOINING SHEETS



Base map compiled from aerial photographs taken by the Royal Canadian Air Force in 1947, and from surveys by the Department of the Interior, Canada, and the Province of Manitoba.

BARRINGTON LAKE
GRANVILLE LAKE MINING DIVISION

Scale: 1 inch to 1 mile, or 1:62,500

